



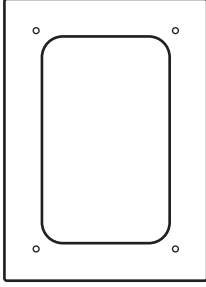
**FL - 46**

**SEHPA KURULUM KILAVUZU**  
**STAND INSTALLATION MANUAL**

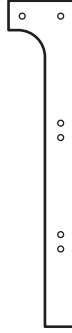
**KULLANMADAN ÖNCE LÜTFEN DİKKATLİCE OKUYUN**  
**PLEASE READ CAREFULLY BEFORE USING**



# PAKET İÇERİĞİ



1 Adet  
Ana Tabla



4 Adet  
Ana Direk



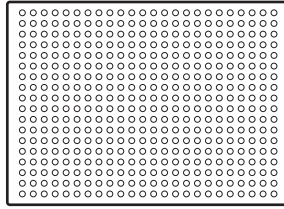
4 Adet  
Uzun Raf  
Kenarı



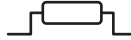
4 Adet  
Kısa Raf  
Kenarı



8 Adet  
Ahşap Lata



1 Adet  
Delikli Saç



2 Adet  
Kulp



4 Adet  
Tekerlek



4 Adet  
3/8 Somun



8 Adet  
Pul



52 Adet  
M6 x 15 Cıvata



52 Adet  
M6 Flanşlı Somun



4 Adet  
M8 x 20 AKD  
Cıvata

## MONTAJ TALİMATI

### DİKKAT !

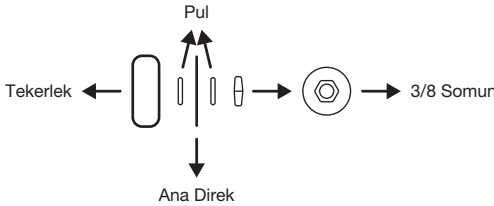
Keskin ve sivri parçalar içerir. Montaj sırasında eldiven kullanın. Çocukları ve evcil hayvanları **uzak** tutun.

1. Ana direklerden iki tanesini yan yatırın, ana tablayı monte edin.

2. Sırayla diğer iki ana direği, 4 adet uzun raf kenarını ve 4 adet kısa raf kenarını M6 x 15 civata ve M6 flanşlı somun kullanarak bağlayın. Ahşap parçalar ve delikli sac, raf kenarının içine oturacağı için montaj yönüne dikkat edin.

**DİKKAT!** Bu aşamada cıvataları asla tam sıkmayın, gevşek bırakın.

3. 4 adet tekerleği monte edin.



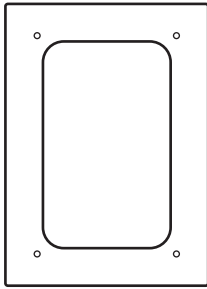
4. Sehpayı ayağa kaldırın tüm cıvataları sıkın.

5. Delikli sac ve 8 adet ahşap latayı yerleştirin.

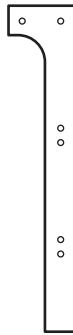
6. 2 adet kulpu sehpa yanlarındaki uygun yerlere M6 x 15 civata ve M6 flanşlı somun kullanarak sabitleyin.

7. FL-46 set üstü fırının ahşap ayaklarını çıkarın. Sehpa ana tablasının altından 4 adet M8 x 20 civatayı geçirerek fırın ile sehpayı sabitleyin.

# PACKAGE CONTENT



1 Main Table



4 x Main Pole



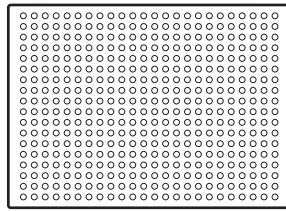
4 x Long Shelf Edge



4 x Short Shelf Edge



8 x Wooden Part



1 Perforated Plate



2 x Handle



4 x Wheel



4 x 3/8 Nut



8 x Washer



52 x M6 x 15 Bolt



52 x M6 Flanged Nut



4 x M8 x 20 Hexagonal Bolt

## INSTALLATION INSTRUCTIONS

### CAUTION!

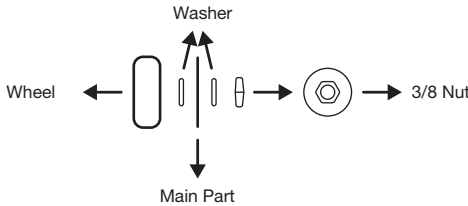
Includes sharp and pointed corners. Wear gloves during the installation. Please keep the children and pets away.

1. Lay two of the main poles on the ground and install the main table.

2. Join the two main poles, 4 long shelf edges, and 4 short shelf edges, respectively, by using M6 x 15 bolts and M6 flanged nuts. Since the wooden parts and perforated plate will be seated on the shelf edges, please pay attention to the installation direction.

**CAUTION!** Never tighten the bolts completely at this stage, leave them loose.

3. Install the 4 wheels.



4. Raise the stand and tighten all the bolts.

5. Place the perforated plate and 8 wooden parts.

6. Fix the 2 handles to the appropriate places near them by using M6 x 15 bolts and M6 flanged nuts.

7. Remove the wooden feet of the FL-46 countertop oven. Secure the oven and stand by inserting the 4 M8 x 20 bolts under the main table of the stand.





[www.barba.com.tr](http://www.barba.com.tr)